

Research methodology



How to find the percentage of the canopy thickness

Make clear zoning of two devices. To be used to explore, three stand at a central point, with four facing back in four directions, and In the middle of each zone Fourth, traverse the angles of each direction using the measuring tool and save it to the table.



How to survey soil cover plants

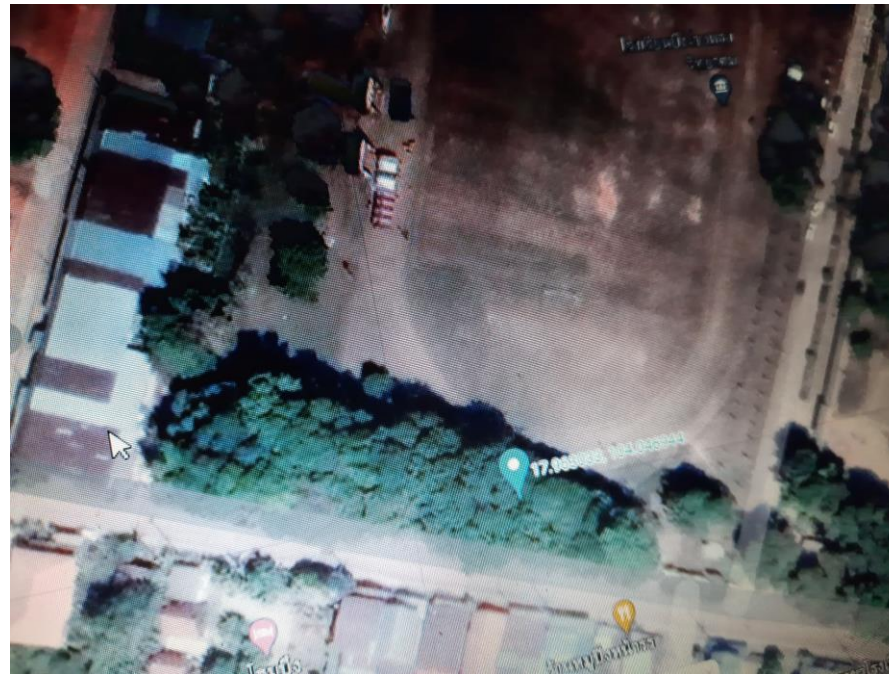


Clear the survey zone and walk the survey and record the results in a table.



Location

Forest in front of Bueng Long Witthayakhom School (latitude 17°57'49 ") (Longj Phinit 104°02'49")





Researcher

1. THIKHUMPHON PHOSRI
2. SUNUNSA SUKAREE
3. SIRADA CHAIYARIT

Teacher advisor

1. MR CHIRAWAT WARIT
2. MRS Suthirat Srisongkram

