

Kinmen Senior High School Campus Mosquito Exploration

Our Final Team Photo

Students

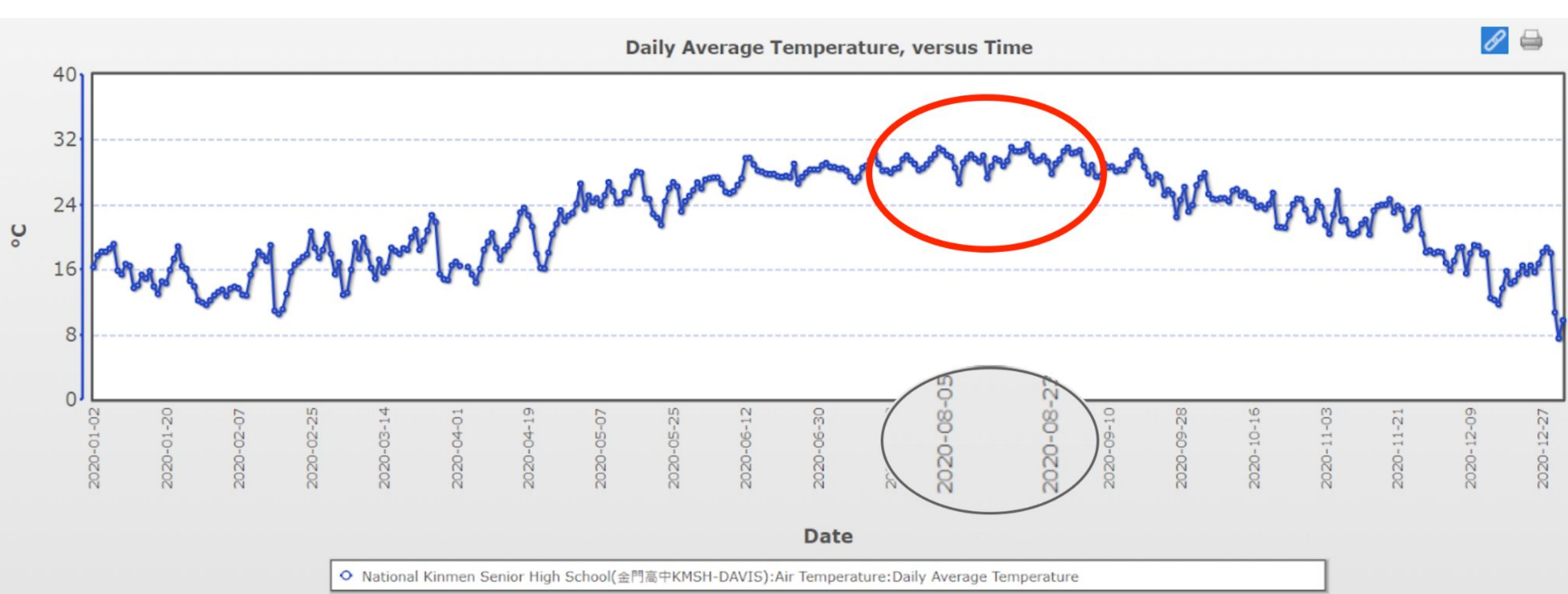
1. 張庭浩 Chang Ting-hao
2. 蔡忠勉 Tsai Chung-Mien
3. 蔡忠勤 Tsai Chung-Chin

Teacher

Yu-Hsien, Lee



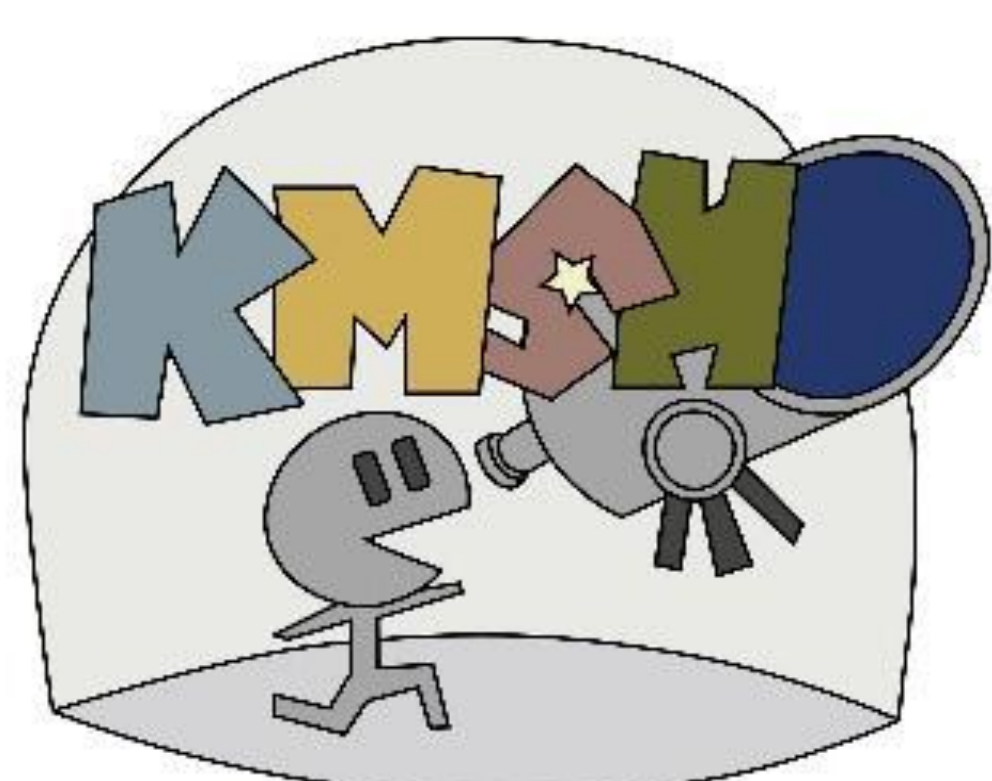
2021 One year temperature



Site: 47NNJ805320(National Kinmen Senior High School)
The above graph shows the daily average temperature of the University for the year 2021.

Result

From the above results, we can see that tsetse were present in almost all areas of the school campus where water had accumulated, regardless of whether there was a water source nearby. The water body at Site A is in a flowing state and is less prone to tsetse growth.



Abstract

In Kinmen, this island is in the subtropical region, summer is a good time for mosquitoes breeding, although there are different types of mosquitoes, but the common ground is that they will lay eggs in water, we collected different locations with stagnant water and observed whether there are signs of mosquitoes laying eggs and find out the impact of different liquids on the desire of mosquitoes to lay eggs, and find out the mosquito data to determine the season and climate of mosquitoes breeding.



Data analysis

Beaker breeding: Two beakers with two different water qualities were placed outside in the shade to attract female mosquitoes to lay eggs.

1. Clear water quality:
2. Humic solution:
(8/17)



Conclusion

1. The mosquito season is mainly concentrated in July and August, the temperature rises to about 28 degrees in the environment
2. In non-moving water, even shallow puddles will have mosquito traces as long as they last long enough.
3. Completely clear water even if left long enough, there will be no mosquitoes, the water needs impurities (fallen leaves, mud, branches) before there will be mosquitoes in the place where the eggs are laid.



Scan the QR code to our website