

A study the relationship between the percentage of tree canopy and the effect of relative humidity.

Background and Significance of the Research



- When trees photosynthesize The tree dehydrates water to reduce the temperature on the leaves, which keeps the air moist.



- The canopy helps to retain moisture in the air and relative humidity affects the growth of trees.

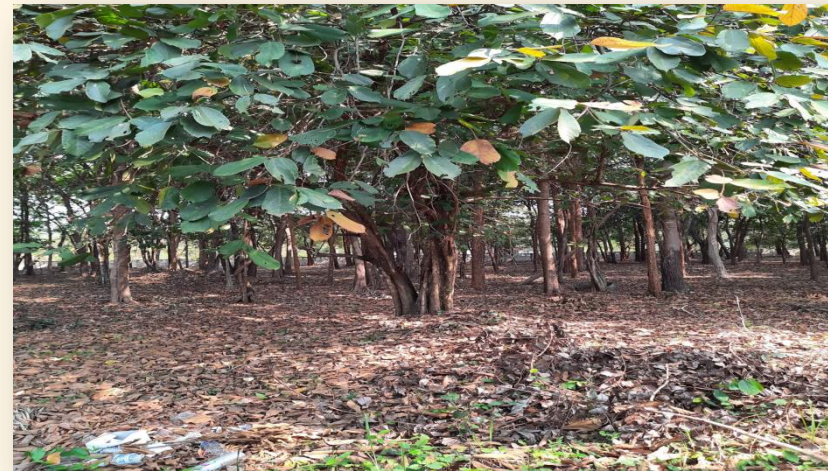
Research question

Does the summit percentage affect the relative humidity of the air?

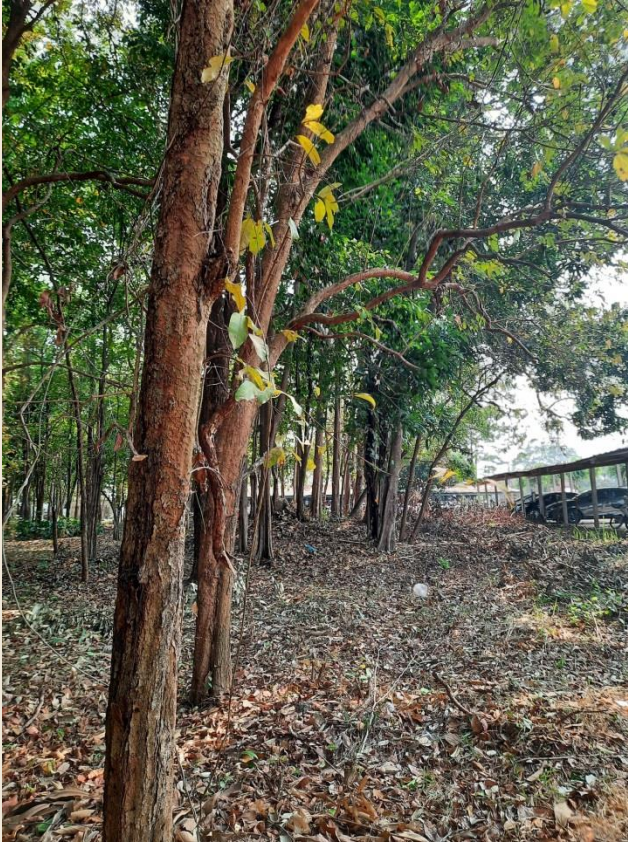


Research objectives

To study the percentage of tree canopy affecting air relative humidity.



Terminology definition



- 01** Summit percentage Refers to the percentage of leaves and branches that cover the forest floor.
- 02** The relative humidity of air is defined as the ratio between the mass of the actual water vapor and the mass of the saturated steam.

Terminology definition



03 The forest place means the forest next to the BuengKhongLong Wittayakom School's garage Area size 30×30 meters

04 Time: 12:00 p.m. means at BuengKhongLong Wittayakom School

Benefits

- 01** For use in afforestation.
- 02** To disseminate knowledge to conserve the environment.
- 03** To be used as knowledge in planting forests to maintain ecological balance.



Relevant documents and research

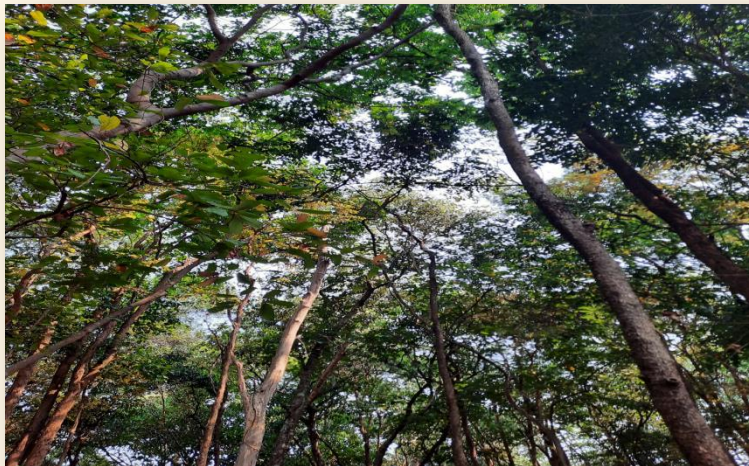
Air relative humidity.

Summit percentage.

Forest ecosystem.

Plant photosynthesis.

Forest abundance.



Research method

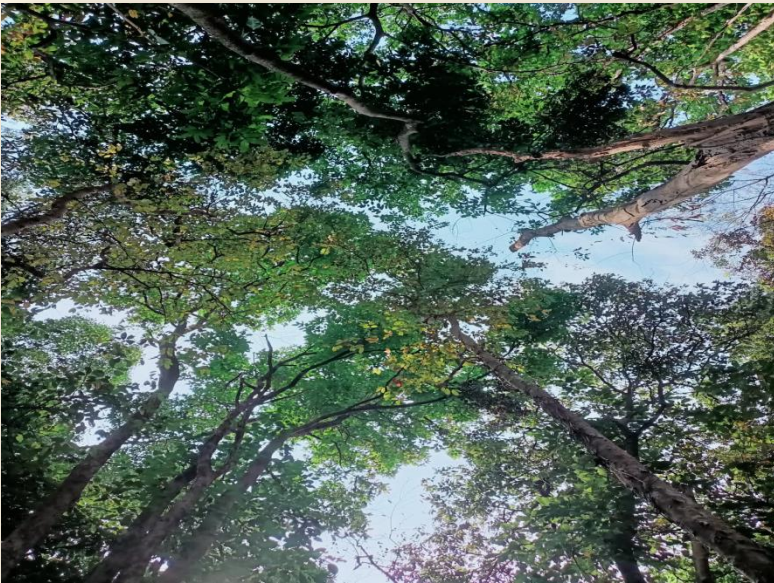


01 Study information about the summit percentage and air relative humidity.



02 Plan the survey and make a table of results and make survey tools with research scope.

Research method



03 Use the densiometer to find the canopy by observing the center of the area and holding the Densio so that the metal ring is in the middle of the top intersection of the tube.(Notice if plants were found. Is the summit frequency), then follow the diagonal step by step. Every time you take a step, take one step and observe the solidity of the summit.

Research method

04 The survey results were recorded by summarizing the summit results table as a percentage and then recorded in the recorded table and finding the relative air humidity and temperature on the study day and recorded in the experimental log table.



Results

วันที่/เวลา	เปอร์เซ็นต์เรือนยอด	ความชื้นสัมพัทธ์อากาศ	อุณหภูมิ
18/02/64	69.3%	44.86%	26°
19/02/64	80.3%	45.32%	28°
20/02/64	94.2%	45.92%	30°
21/02/64	87.3%	45.75%	29°
22/02/64	77.4%	44.94%	27°
23/02/64	89.0%	45.92%	29°
24/02/64	91.8%	46.19%	30°



Prepared by

Rathaphum

PraSunil

Nanthiya

Chaisarn

Chonlada

Phosing

Teacher advisor

Mrs. Suthirat Srisongkram

Mr. Nirapai Saithichai

Ms. Phonnapa Phosri

