

# 2020 GLOBE Annual Survey Highlights

## EDUCATION



### MATERIALS & RESOURCES

GLOBE materials and educational resources are accessible and useful to the GLOBE community

#### 2 in 5 Teachers

Reported that they needed the most support in developing data collection instruments in order to assess the effectiveness of GLOBE materials and resources in the classroom



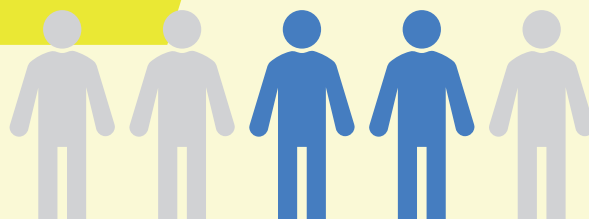
Of GLOBE teachers use atmosphere protocols at least once a week



Of teachers use the GLOBE Teacher's Guide at least once every 3 months



Of GLOBE teachers have aligned GLOBE materials to meet regional or national standards



### PROFESSIONAL DEVELOPMENT

GLOBE's capacity to deliver high quality professional learning experiences (trainings) has increased

#### 4.2 out of 5

Avg rating on teacher training workshops



"I learned a lot of ways to do hands-on activities with my students!"

"Outstanding presentations and planning!"

"Phenomenal trainers and information"



### STUDENT INVESTIGATIONS

Students develop high quality STEM investigations of Earth systems phenomena from a local to global scale perspective

## 248

Number of students developing STEM investigations

\*based on IVSS project reports



### EVALUATION

Information on GLOBE's educational impact is regularly shared by the community

## 63

Number of articles, publications, or presentations about the GLOBE program

\*based on Google Scholar search



Additional 2020 survey infographics available: **TECHNOLOGY** | **SCIENCE** | **COMMUNITY** | **COMMUNICATION**

**Thank you for your participation. Look for the 2021 Survey coming soon!**

## Overview of GLOBE Annual Survey

The GLOBE Annual Community survey is the primary data collection tool for gathering information from the GLOBE community. It is administered to GLOBE Teachers, Partners, Country Coordinators and members of the GLOBE International STEM Network (GISN) at the end of each calendar year. The current survey questions were developed with input from each of the Working Groups and align with the goals and performance measures in the 2018-2023 Strategic Plan. In concert with other data sources, the survey data is primarily used to monitor the GLOBE Program's progress toward achieving the performance targets in the strategic plan. Highlights from the annual survey are typically shared with the GLOBE Community during the annual meeting. On occasion, survey results are presented to the Working Groups to facilitate in-depth conversations about the data.

A different survey version is administered to each of the adult community groups -- GLOBE Teachers, Partners/Country Coordinators and the GISN. The majority of the questions on each survey are the same. However, a few questions are unique to each group. For example, the GLOBE Teacher survey includes questions about classroom practices, the Partner/Country Coordinator survey includes questions about managing GLOBE implementation in schools and the GISN survey includes questions about the relevance of GLOBE protocols to STEM research activities.

One of the major challenges of the survey has been the low number of responses, which limits our ability to generalize the results across the GLOBE Community. Table 1 below shows the number of responses to each of the surveys and the response rate since 2018.

	2018		2019		2020	
	# of responses	Response rate	# of responses	Response rate	# of responses	Response rate
<b>Teachers</b>	<b>436</b>	<b>2%</b>	<b>348</b>	<b>2%</b>	<b>280</b>	<b>3%</b>
<b>U.S. Partners</b>	<b>51</b>	<b>25%</b>	<b>67</b>	<b>33%</b>	<b>46</b>	<b>33%</b>
<b>Country Coordinators</b>	<b>61</b>	<b>53%</b>	<b>62</b>	<b>54%</b>	<b>82</b>	<b>65%</b>
<b>GISN</b>	<b>27</b>	<b>9%</b>	<b>25</b>	<b>8%</b>	<b>18</b>	<b>15%</b>

*\* 2018-2019: Survey sent to 20,686 teachers, 204 US Partners, 113 Country Coordinators and 307 GISN*

*\*\*2020 Survey sent to 8,262 teachers, 138 US Partners, 126 Country Coordinators and 119 GISN*

One factor that may account for the low responses is the manner in which the survey results are communicated. To address this issue, GIO evaluation created a set of one-page summaries of the survey results in each of the five goal areas of the strategic plan. These one-pagers (Communications, Community, Education, Science, and Technology) highlight important and relevant findings gleaned from the survey data. We hope this information will motivate the GLOBE community to take more interest in the survey and respond to the survey in a timely fashion.