



# GLOBE Air Quality campaigns



*'The campaign is open !'*



*GLOBE Air Quality campaigns are organized yearly in spring and in the autumn. Measurements by schools are entered on the GLOBE database and available to everyone to use for research purposes.*



## ➤ Timing



**Spring campaign** : March to May.

**Fall campaign**: September to October.

**Special events**: get involved when there is a special event such as forest fires, volcanic eruptions, dust storms, etc. that create a lot of aerosols in your area.

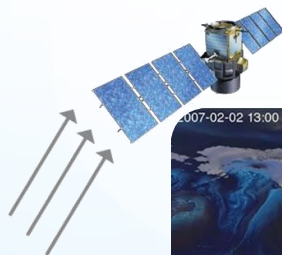
## ➤ What you can do

- **Ask questions** and explore
- **Observe** the sky (clouds, sky colour, visibility) and **measure** (atmospheric pressure, temperature ...; if you have a sun photometer, measure the atmosphere optical thickness)
- **Enter the data** on the GLOBE database
- **Compare your** measurements with satellite data (Calipso ...)
- **Analyze** the results
- **Think** about solutions and **be part** of the change

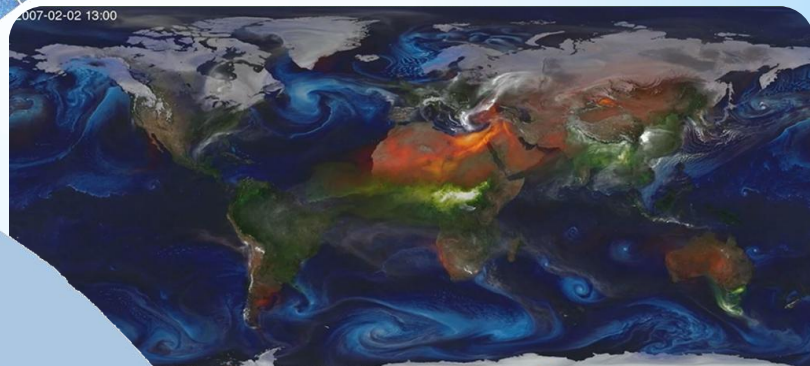
## ➤ Share your findings

To understand what the data collected means, make sure to set time aside for analysis and projects. We recommend that schools share a report presenting their findings. The overall findings from the campaign will be presented at a European science conference of Calisph'Air later this year.

Many thanks for taking part in the campaign! Your data contributes to aerosol science and monitoring in relation to climate change and air quality.



2007-02-02 13:00



NASA 10-km GEOS-5 Aerosol Optical Depth  
Dust | Organic & Black Carbon | Sulfates | Sea Salt