

AQC4 Traffic Count Survey

Activity: Conduct a traffic count survey

Purpose: Measure how much traffic is entering your school grounds and/or travelling by your school on adjacent roads. This will provide you with traffic data that will help you when interpreting your NO₂ results.

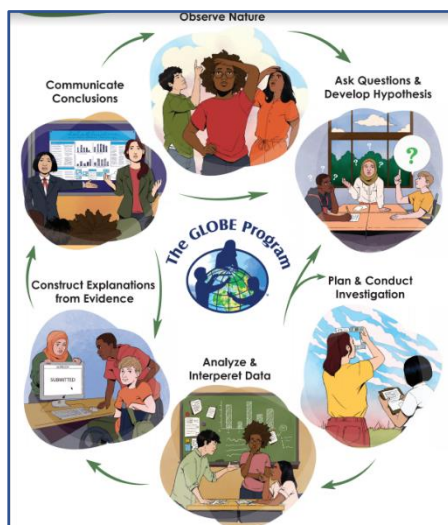
Tools required: Pencil, design your own recording sheet or use this [traffic survey recording sheet](#), stop watch/phone to time recording interval

Supporting documents: Air Pollution factsheet

Introduction

How much traffic is coming into your school every day and how much traffic is passing by on nearby roads? As you know, nitrogen dioxide is a traffic-related air pollutant. It would be helpful to have some information about how many vehicles are passing by your school during the NO₂ measurement period, then you can use this information to interpret your NO₂ results when you receive them.

If your school is located close to a major road (motorway, large National road), you can look up the traffic count data on the [Transport Infrastructure Ireland website](#).



Collecting supplementary data is an important part of the **scientific process**. Students are focusing on:

- Investigating

The results of the traffic survey will help

- Guide the data analysis and interpretation of results

Traffic Count Method

1. Decide where to conduct your traffic count, you can pick more than 1 location
2. Divide into teams of 2 people
 - a. 1 person identifies the type of vehicle (car, bus, bike)
 - b. 1 person to record the information on the recording sheet
3. Position teams of 2 at different locations
4. Choose your timing interval (for example 15 or 20 minutes)
5. Choose what time of the day to conduct your survey, you could pick several different times of the day to capture busy traffic periods and lighter traffic periods
6. You could choose to add additional information to your recording sheet, such as how many people per vehicle
7. Make a graph with the traffic data you collected
8. If you wish - Inform your school community about transport and mobility to and from school