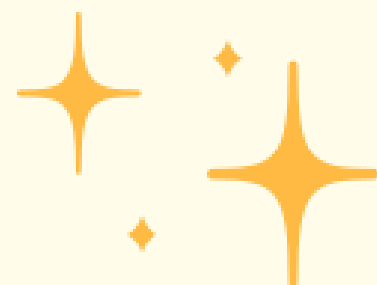




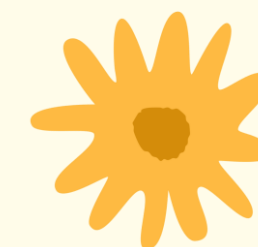
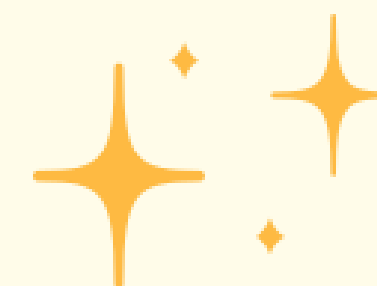
# COLOUR



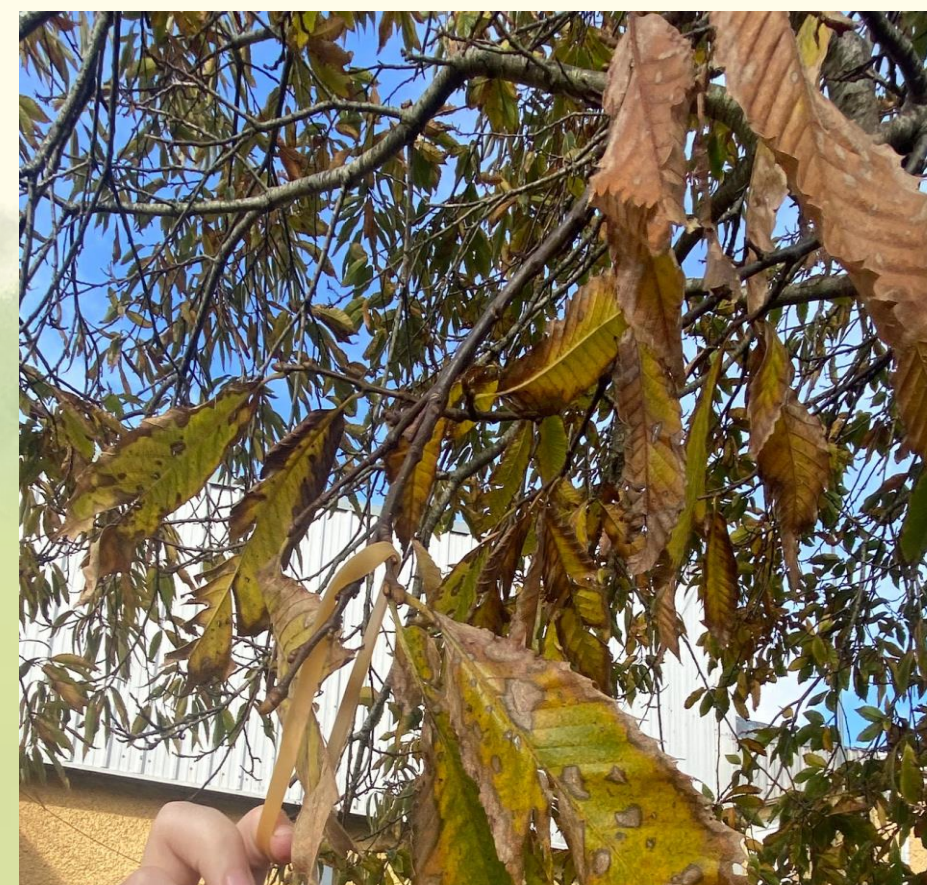
ee



# FALL!



Presented by 2<sup>nd</sup>/3<sup>rd</sup> Class Timoleague  
National School







# MEET OUR TEAM



Hello everyone!  
We are 2<sup>nd</sup> and 3<sup>rd</sup> class  
from Timoleague National  
School.  
We are so excited for you to  
hear about our Colourfall  
project 😊







# MEET OUR TREE



We chose a beautiful Sweet Chestnut Tree that is right beside our school. This picture was from the first day of our project!







# WHAT WE DID



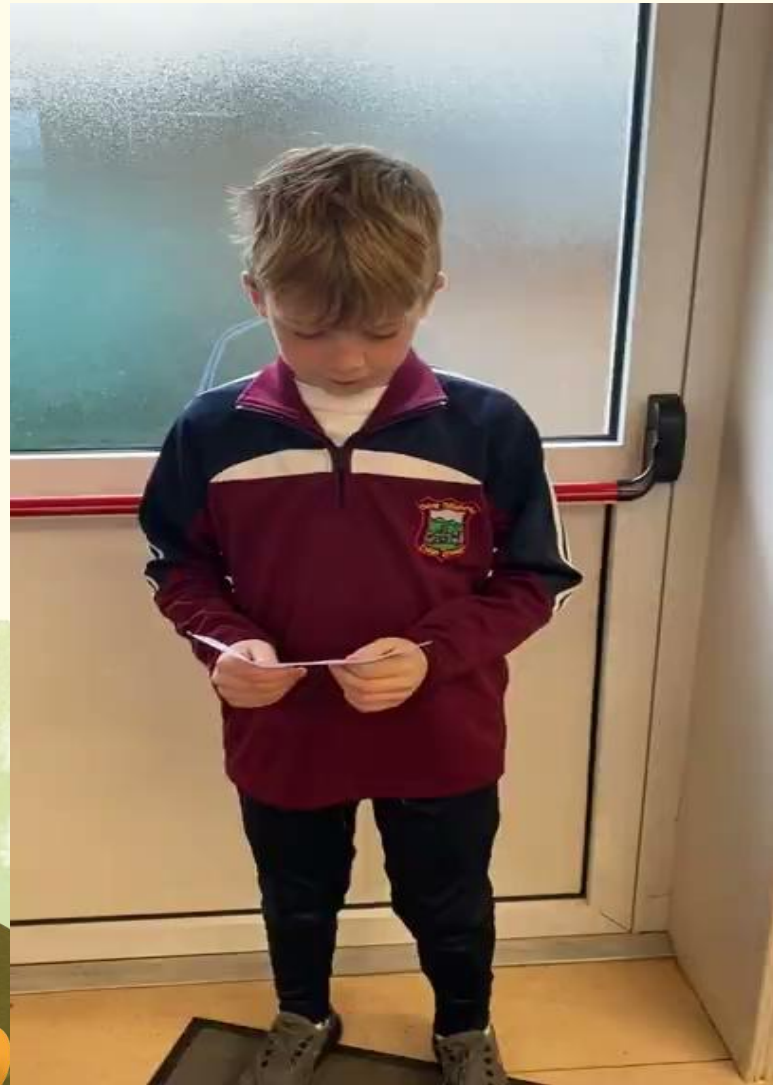
Click to hear  
from two of  
our 3<sup>rd</sup> class  
students!







# WHAT WE DID



Listen to two  
2nd class  
students detail  
how we  
continued our  
project







# OUR QUESTIONS

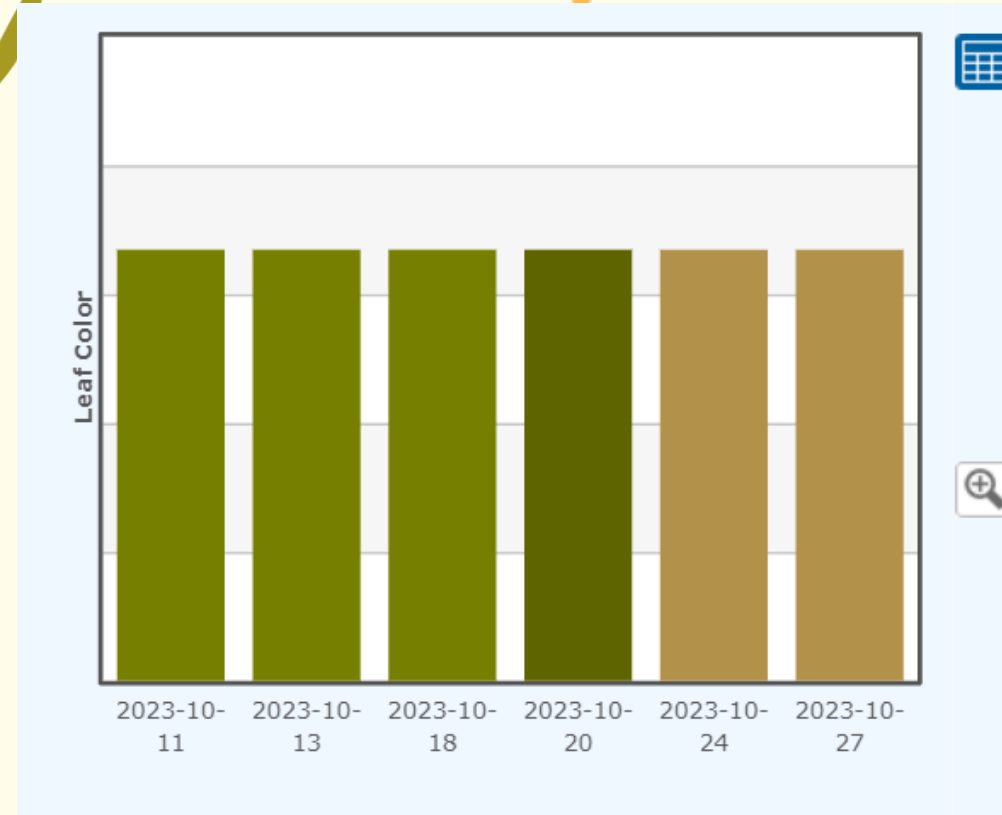


- How long does it take for the leaves to change colour in Autumn?
- What colours will a Sweet Chestnut tree's leaves turn?
- Does it take longer for the buds to burst in Spring or the leaves to change colour in Autumn?

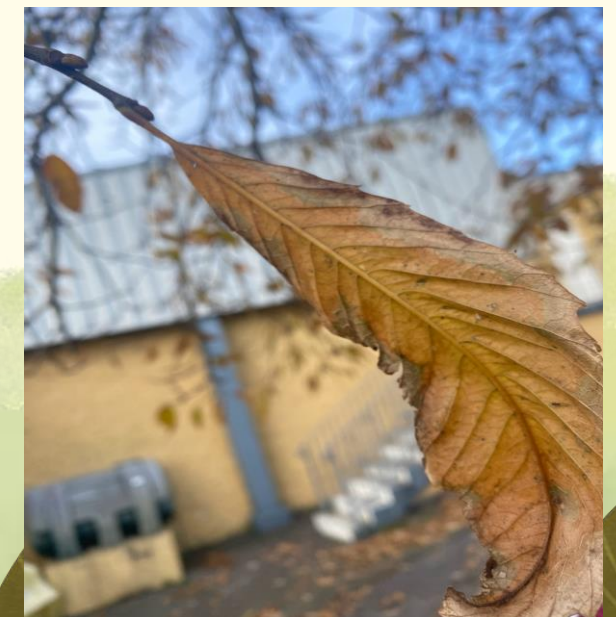


# OUR FINDINGS

These are the colours that are leaves were at different stages



We observed our leaves changing colours for 6 weeks before they fell





# CONCLUSIONS

For our Sweet Chestnut Tree it took about 8 weeks for the buds to burst in Spring and only 6 weeks for the leaves to change colour in Autumn.

This project made us so much more aware of our surroundings and the beauty of Autumn!







**THANK YOU !**

