



Poltava school 38, Ukraine
Coordinator: Alvard Melkonian, geography
teacher



THE GLOBE PROGRAM IS A NEW STORY FOR OUR INSTITUTION. OUR SCHOOL IS PARTICIPATING IN THIS PROJECT FOR THE FIRST TIME, NAMELY WITHIN THE SPRING CAMPAIGN 2021. OUR TEAM CONSISTS OF CREATIVE STUDENTS AND TEACHERS. OUR TEAM ALSO INCLUDES AN ENGLISH TEACHER - OLEH KOLOMIETS, WHO HELPS TO OVERCOME LANGUAGE BARRIERS.



ОЗОНЗ "ЖОРАВСЬКИЙ
НВК"ЗОШ І-ІІІ СТУПЕНІВ-
ДНЗ (ЯСЛА-САДОК)"
ЯГОТИНСЬКОЇ РАЙОННОЇ
РАДИ КИЇВСЬКОЇ ОБЛАСТІ



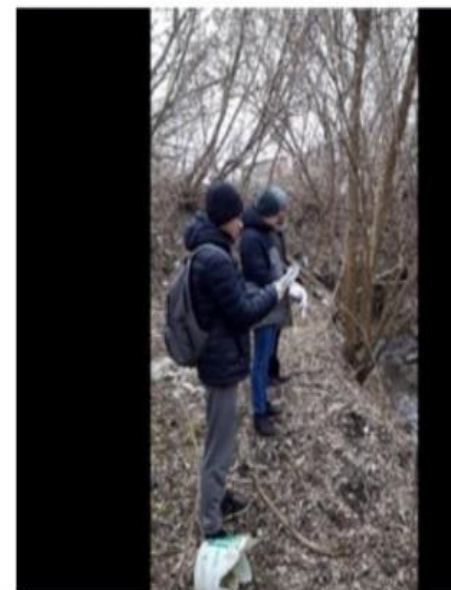
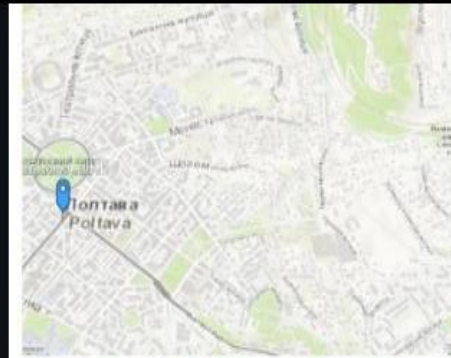
**Together with partner schools
took part in Water Bodies
Challenge**

Where they raised the environmental problems of the salty rivers of Poltava, a fragment of the Story maps

Environmental problems of small rivers of Poltava

Many rivers of Poltava lose their natural qualities and need immediate restoration. This is especially true for Vorskla River ecosystems.

Alvard Melkonian, Bobrov Bogdan, Kostiuk Yehor, Reshetnyk Anastasia, Kirichenko Yehor | 17 апреля 2021 г.



Together with partner schools, we held a joint online conference

The screenshot shows a Zoom online conference in progress. The top bar indicates the meeting is titled "Zoom Конференция, 40 мин" and shows a list of participants including Natalia Bosko, Alvard Melkon..., Anna Masliuk, Zhenia Fedorovi..., Anastasia Reshe..., and Branka Znidaric. The main window displays a presentation slide from "The GLOBE Program" titled "This is our cherry. Spring 2021". The slide lists measurements taken on the 26th of April, 2021, for a cherry tree. The measurements are categorized into Atmospheric, Hydrological, Soil Temperature, Biometry, and Phenology. The slide also includes photos of students taking measurements in a garden.

Atmospheric Measurements:

1. AIR TEMPERATURE
2. BAROMETRIC PRESSURE
3. CLOUDS
4. PRECIPITATION
5. RELATIVE HUMIDITY

Hydrological Measurements:

1. WATER TEMPERATURE
2. ALKALINITY
3. Ph
4. DISSOLVED OXYGEN
5. CONDUCTIVITY
6. NITRATES

Soil Temperature – on 5 and 10 cm

Biometry – TREE HEIGHT AND CIRCUMFERENCE, CANOPY COVER AND GROUND COVER

Phenology – GREEN UP AND GREEN DOWN

The presentation slide also includes the text: "This is our cherry. Spring 2021" and "Our measurements taken on the 26th of April, 2021:". The measurements listed are:

- leaf 1- 13 mm,
- leaf 2- 14 mm,
- leaf 3- 15 mm
- leaf 4- 17 mm

The slide also features a logo for "The GLOBE Program" and a photo of a student taking measurements in a garden.

Our research

Green-up

Tree and Shrub Green-Up Data Sheet

School Name: **Poltava school № 38**; Study Site: **school yard**; Observer names: **Kirichenko Egor, Kostiuk Egor, Bobrov Bogdan, Reshetnyk Anastasia**; Plant Scientific Name: **Betula**; Genus **deciduous trees of the birch family**; Species: **birch hung**; Plant Common Name: **birch** Green-Up Cycle: **june-july** Year: **25**

Comment: 16.04 – the temperature is +8°C degrees, rainy, birch - budburst, at the end of the bud, leaves, and earrings begin to open

22.04 - the temperature is +16°C degrees, sunny

29.04 - the temperature is +16°C degrees, sunny

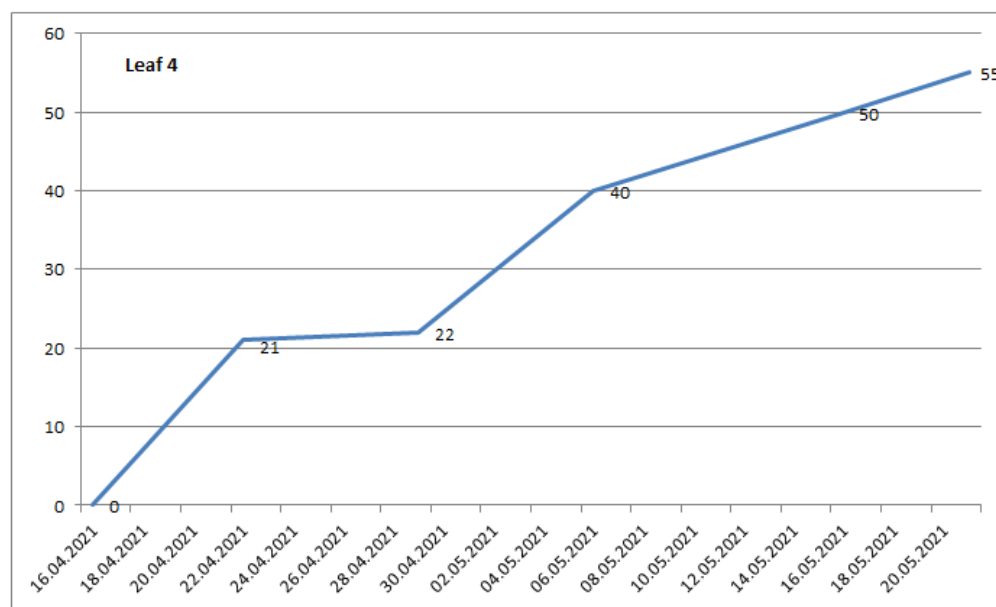
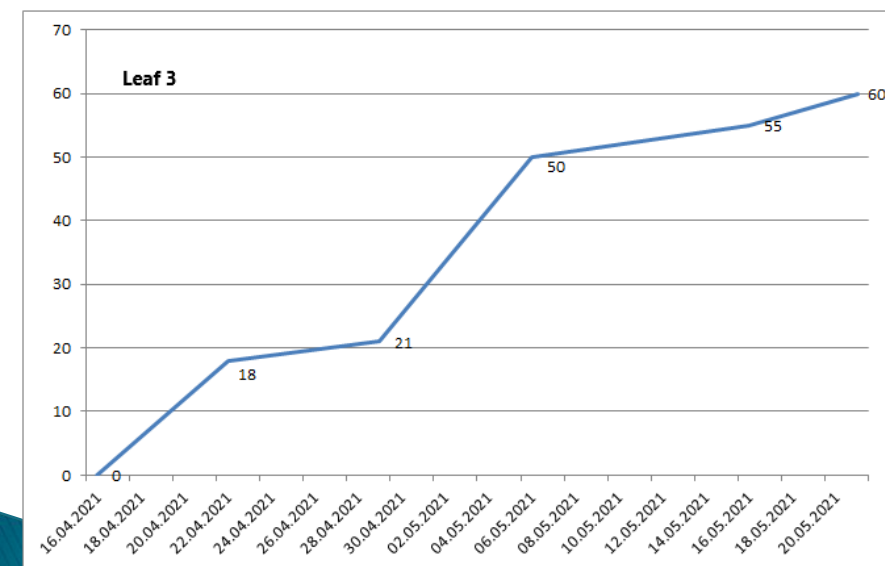
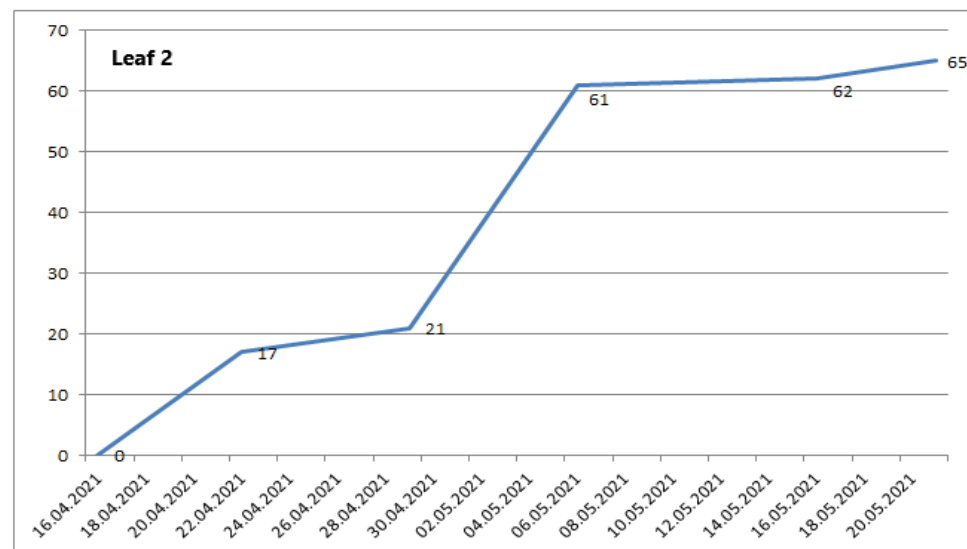
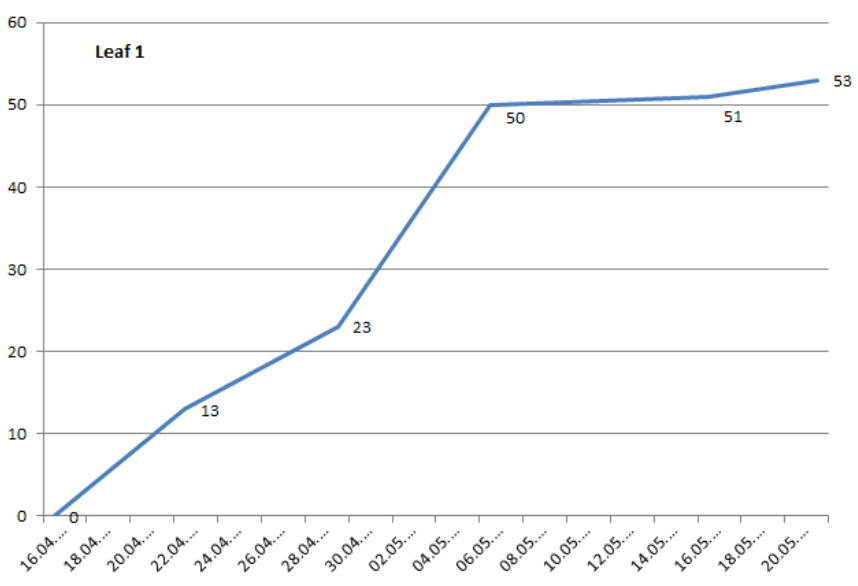
06.05 - the temperature is +17°C degrees, sunny

16.05 - the temperature is +28°C degrees, sunny

21.05 - the temperature is +12°C degrees, sunny

Date (day and month)	Leaf 1	Leaf 2	Leaf 3	Leaf 4	Data entry
16.04	budburst	budburst	budburst	budburst	+
22.04	13 mm	17 mm	18 mm	21 mm	+
29.04	23 mm	21 mm	21 mm	22 mm	+
06.05	50 mm	61 mm	50 mm	40 mm	+
16.05	51 mm	62 mm	55 mm	50 mm	+
21.05	53 mm	65 mm	60 mm	55 mm	-





Green-up

Tree and Shrub Green-Up Data Sheet

School Name: **Poltava school № 38**; Study Site: **park "Peremoha"** Observer names: **Kirichenko Egor, Kostiuk Egor, Bobrov Bogdan, Reshetnyk Anastasia**; Plant Scientific Name: **Quercus**; Genus **a genus of parrenial plants family of the beech**; Species: **pedunculate oak**; Plant Common Name: **oak** Green-Up Cycle: **end of may - september** Year: **50**

Comment: 16.04 – the temperature is +8°C degrees, rainy

22.04 - the temperature is +16°C degrees, sunny

29.04 - the temperature is +16°C degrees, sunny

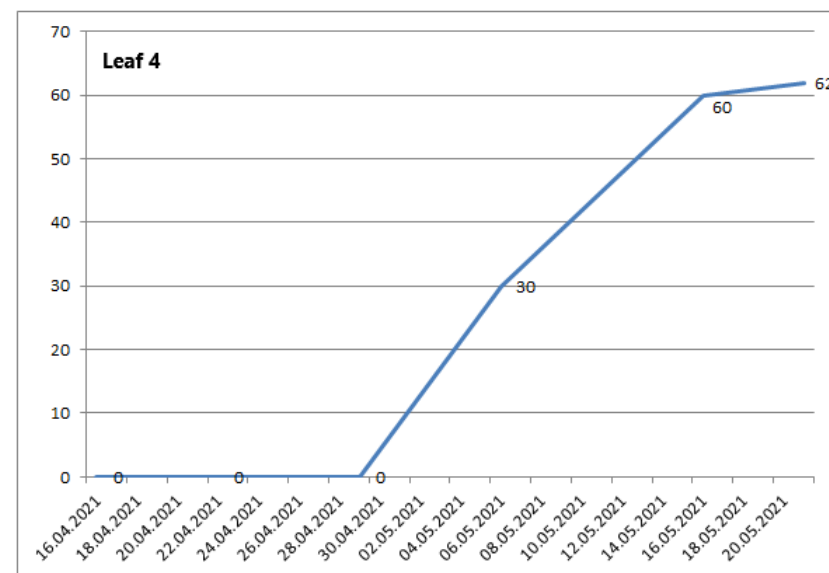
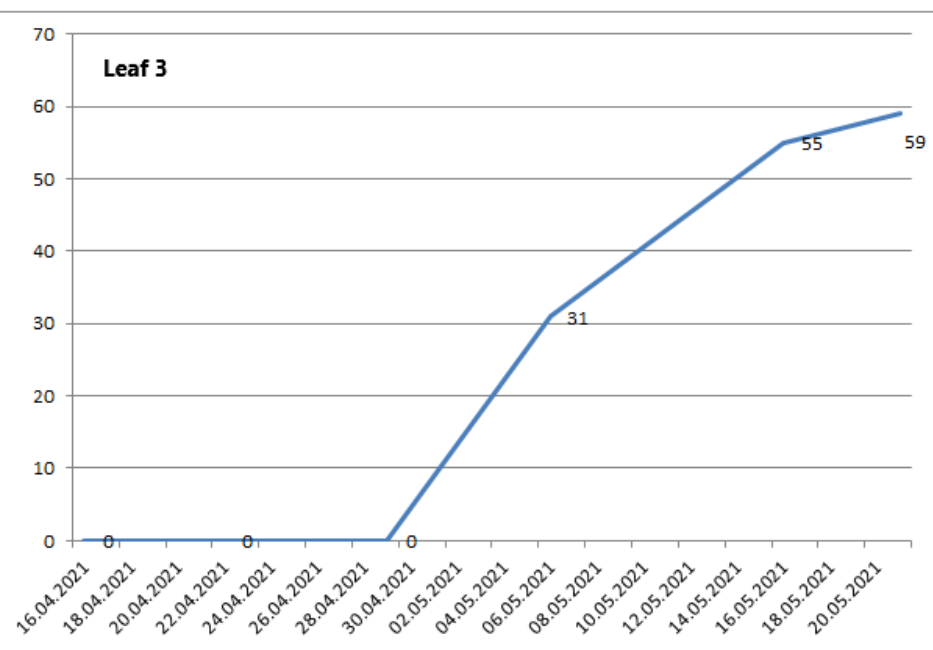
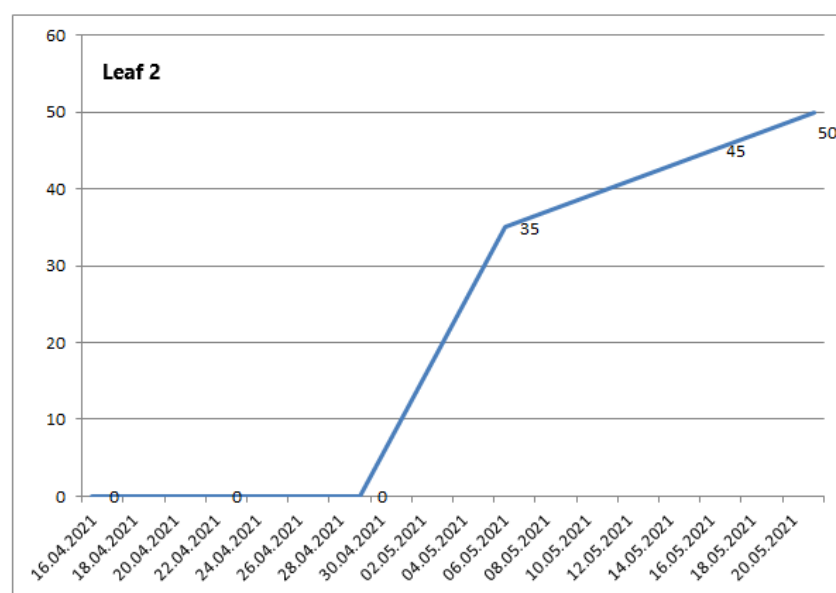
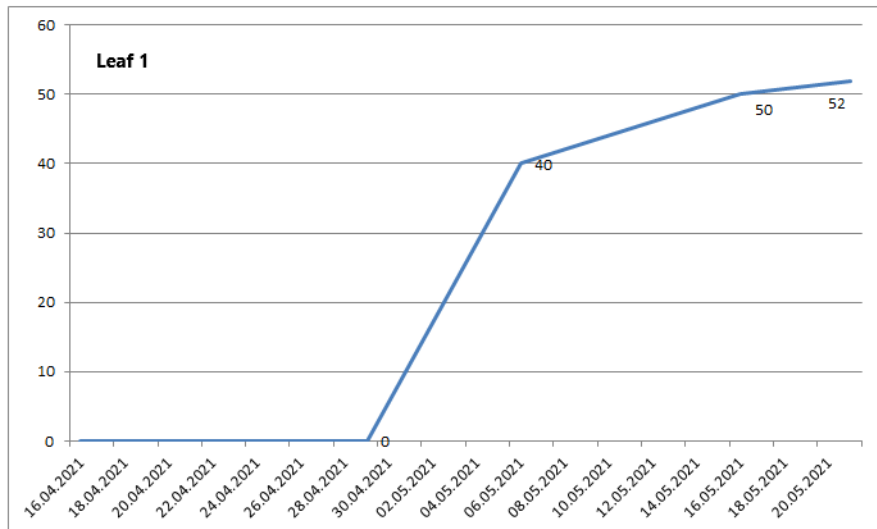
06.05 - the temperature is +17°C degrees, sunny

16.05 - the temperature is +28°C degrees, sunny

21.05 - the temperature is +12°C degrees, sunny

Date (day and month)	Leaf 1	Leaf 2	Leaf 3	Leaf 4	Data entry
16.04	swelling	swelling	swelling	swelling	+
22.04	swelling	swelling	swelling	swelling	+
29.04	budburst	budburst	budburst	budburst	+
06.05	40 mm	35 mm	31 mm	30 mm	+
16.05	50 mm	45 mm	55 mm	60 mm	+
21.05	52 mm	50 mm	59 mm	62 mm	-





Green-up

Tree and Shrub Green-Up Data Sheet

School Name: **Poltava school № 38**; Study Site: **the museum-estate of Ivan Kotlyarevskii**; Observer names: **Kirichenko Egor, Kostiuk Egor, Bobrov Bogdan, Reshetnyk Anastasia**; Plant Scientific Name: **Prunus subg. cerasus**; Genus **plum**; Species: **cherry ordinary**; Plant Common Name: **cherry** Green-Up Cycle: **april** Year: **10**

Comment: 16.04 – the temperature is +8°C degrees, rainy

22.04 - the temperature is +16°C degrees, sunny, the first leaves begin to open

29.04 - the temperature is +16°C degrees, sunny

06.05 - the temperature is +17°C degrees, sunny

16.05 - the temperature is +28°C degrees, sunny

21.05 - the temperature is +12°C degrees, sunny

Date (day and month)	Leaf 1	Leaf 2	Leaf 3	Leaf 4	Data entry
16.04	budburst	budburst	budburst	budburst	+
22.04	budburst	budburst	budburst	budburst	+
29.04	10 mm	15 mm	10 mm	10 mm	+
06.05	35 mm	30 mm	35 mm	23 mm	+
16.05	40 mm	40 mm	45 mm	35 mm	+
21.05	45 mm	42 mm	46 mm	40 mm	-



