

Print on cardstock to create a box
for your NUBE deck.

Print on cardstock to create a box
for your NUBE deck.



2 to 6 Players

DEAL 7 cards to each player, and flip one to start the discard pile.

DISCARD cards by matching either the cloud type or sky color, or by playing a wild card (Obscurations and Mysteries). If the player cannot play a card, they must draw 1 card, which can be played immediately, if possible.

NUBE (pronounced noo-beh) is the Spanish word for cloud. When a player is about to play their second to last card, they must shout “Nube!” or draw 2.

WIN by discarding all of your cards first!

Customize the game by adding or removing Mystery cards. We recommend starting with 2 to 3.

For complete instructions, go to
observer.globe.gov/nubegame



NUBE
a GLOBE Clouds game



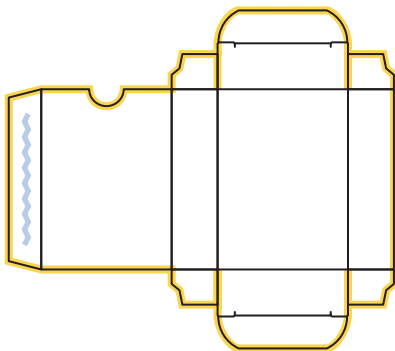
NUBE

nesec



**NASA Earth Science
Education Collaborative**

Funded through NASA's Science Activation Program.



Cut along the yellow highlighted lines. **Fold** along all of the black lines. Apply **glue** to the panel with the blue zig zag line.