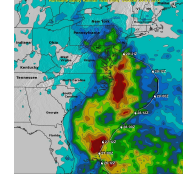


Global Precipitation Measurement Mission

“Friends of GPM” Weekly Education/ Communications Update



August 21st, 2014



Greetings GPM Friends-

We are now a little more than halfway through the Atlantic Basin hurricane season, which runs from June 1st through November 30th. This newsletter will focus on hurricanes, which are actually “tropical cyclones”. Learn about how tropical cyclones are classified and a whole lot more at the NWS’s “National Hurricane Center” website: <http://1.usa.gov/1pOvBT5> and NOAA’s “Hurricane Education” page at <http://1.usa.gov/1kYNuhM>.

Almost two weeks ago, Hawaii was in the path of two fairly large tropical storms. Read the story of Iselle, which was the strongest tropical storm to hit the Big Island in over 50 years at <http://1.usa.gov/1wewngX>. NASA’s TRMM satellite was able to collect many images of this powerful storm as it passed over Hawaii.

And speaking of TRMM, having been up since 1997 and proven a workhorse that has yielded phenomenal data, it is now beginning to run out of fuel. Although TRMM will remain active and continue to collect data for the near future, read about how it will slowly be decommissioned at <http://1.usa.gov/1vnxqXS>. In a few months, NASA will send an ocean-wind monitoring instrument up to the ISS- read more about this at <http://1.usa.gov/1mrarFL>.

The GPM education team and NASA have developed a wide suite of resources to help teach about tropical cyclones. You can see these at <http://1.usa.gov/1tvnl9S>.

In other news, GPM is looking for classroom teachers who are interested in using some of our educational resources and providing us with feedback. Please respond to our survey at <http://svy.mk/UZi6Dm> if interested, and feel free to spread the word.

Have a great end of summer! Dorian